

Document Scanners

fi-6140 / fi-6240

departmental

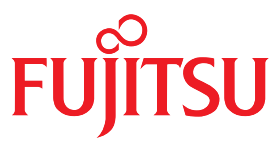


fi-6240

fi-6140







- 60 ppm / 120 ipm (duplex) at 200 dpi in monochrome and grayscale
- Paper protection and intelligent multifeed functions
- **Unique:** Embossed Card scanning (ISO 7810)
- **New:** Bundled with ScandAll Pro Ver 1.5
- Auto colour recognition, autosize recognition and auto deskew functionality
- A8 – A4 scanning (+ extra long documents)
- Dual Interface – Ultra SCSI/USB 2.0 selectable
- Best in class 600 dpi optical resolution
- Includes Kofax VRS 4.1 Professional and Adobe Acrobat 8.0 Standard



THE POSSIBILITIES ARE INFINITE

fi-6140 / fi-6240

fi-6140	50 Sheets	50 to 600 dpi	Simplex 60 ppm	Duplex 120 ipm	
					
	50 Sheets	50 to 600 dpi	Simplex 60 ppm	Duplex 120 ipm	fi-6240

Revolutionising departmental scanning at the desktop, Fujitsu's high performance fi-6140 and fi-6240 scanners

Taking departmental scanning to the next level, the impressive fi-6140 and fi-6240 scanners are two of the fastest and most compact scanners in their class offering unrivalled image processing, increased capture reliability and a high daily throughput thereby improving user and business efficiencies.

Fast and compact

The fi-6140 and fi-6240 scanners from Fujitsu are amongst the fastest and most compact scanners in their class. Not only do they have incredibly small footprints with the fi-6140 having an impressive 160 mm x 300 mm footprint and the fi-6240 coming in at 560 mm x 300 mm. But they are also exceedingly fast. Both scanners can scan at a speedy 60 pages per minute in monochrome or greyscale. When duplex mode is selected 120 images per minute are achievable (A4, 200 dpi). For colour scanning the throughput speeds are 40 pages per minute or 80 images per minute (A4, 300 dpi).

The ADF capacity is 50 sheets and the design of the paper chute enables the user to continuously feed mixed batch documents containing paper of different weight and size, effectively digitising large volumes of paper documents in minimal time.

First scanners in their class to adopt high-end fi-series functions

Both the fi-6140 and fi-6240 scanners have inherited a host of intelligent 'fi-series' features from higher end scanners in the Fujitsu range. Such features help to facilitate worry free mixed batch scanning of documents containing paper of different weights, quality and sizes:

Paper protection function

This function puts users at ease with its ability to protect valuable documents by immediately stopping the scanning process when it recognises that a jam is occurring or about to occur.

Intelligent multifeed and multifeed ignore function

This simplifies pre-scanning preparation and improves efficiency by ignoring documents that tend to trigger false misfeed alerts, such as photo and sticky note attached documents.

Auto-colour, auto-resize and auto-deskew recognition

The fi-6140C and fi-6240C are the first scanners in their class to offer such highly valued automatic functions tightly integrated for dedicated document image processing. As a result, they bring about dramatic digitising efficiencies through fast scanning and simultaneous high speed image processing. Auto colour automatically identifies the colour characteristics of the original document and stores each page accordingly, thereby increasing processing speed and minimising storage requirements. Auto resize ensures that when a mixed batch of document sizes are scanned then only the exact size of the scanned document appears on screen and automatic deskew ensures that if a document is scanned at a slight angle then its digitised image will be straightened.

The fi-6140 and fi-6240 feature active separation modules as opposed to passive separation pads that merely rely on the paper-sheets friction co-efficient relative to that of the rubber material holding back subsequent sheets of paper. These models additionally feature an active paper protection mode that reliably ensures that fragile documents (as often seen in aged archive areas or in logistics operations) are not harmed, and also that the physical stress on a single sheet of paper is kept to a minimum. This is as opposed to other departmental scanners that rely on a u-shaped paper path which places stress on documents by forcing them to bend through a full 180 degrees.





ScandAll PRO

ADOBE ACROBAT 8 STANDARD 

The fi-6140 and fi-6240 can support a multitude of documents and material through the ADF from credit cards to plastic cards in both portrait and landscape mode up to very thick card board like materials (up to 210 g/m²). The ADF chutes can accommodate any sizes from A8 to A4 and can also support extra long document scanning at up to 3084 mm length compared to an A4 sheet at 297 mm.

Software bundling:

The fi-6140 and fi-6240 scanners come bundled with ScandAll Pro Ver 1.5 image capture software, which effectively enables the scanners to efficiently binarize scanned data prior to transmission. ScandAll Pro is a unique and fully featured professional capture client that allows for the scanner to be driven through either TWAIN or ISIS drivers. This application also supports additionally applying image enhancement functionality to the capture process by utilising the bundled version of VRS Professional. It also contains the ability to create searchable PDF files through the onboard OCR functionality. Furthermore, ScandAll Pro 1.5 includes patch code and bar code recognition modules for automated job separation during batch scanning routines. A powerful function that will prove its value in daily use is the capability of ScandAll Pro 1.5 to simultaneously create multiple image files from a single paper document, where both image files can differ significantly in their characteristics (such as resolution, colour mode, file format, static data, storage location or the retrievable text information that is embedded).

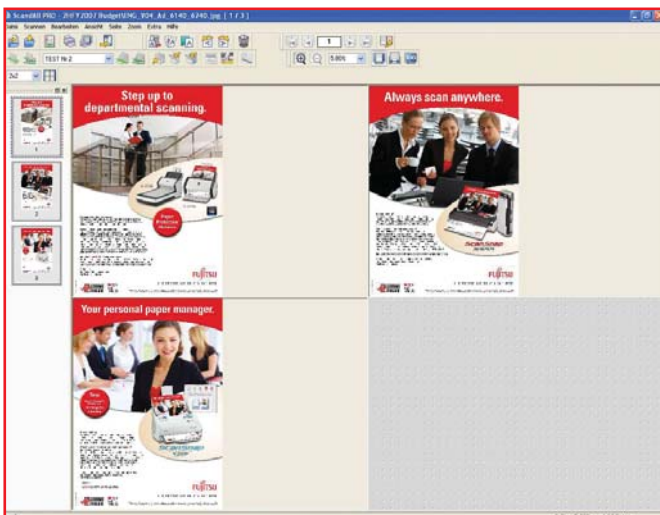
This in turn ensures that it is possible for today's information or knowledge workers to be able to utilise either the fi-6140 or fi-6240 models for their own or team support next to feeding documents into the leading vertical or line of business (LoB) application.

Both models include a full license of Kofax VRS 4.1 Professional which can be used for adding image enhancement options to the scanning process. VRS revolutionizes scanning and makes the process of scanning documents less costly in terms of time for preparation and of manual intervention during the scanning process.

The image enhancement options can be combined to receive digital document images that show high visual quality and require little or no additional manual interference. Some typical options include; intelligent content orientation recognition and auto rotation, automatic colour detection, blank page detection and deletion as well as background saturation capturing simplicity and streamlined business process automation. It enables information workers to focus on their productive tasks, at the same time supporting them to capture information from paper documents by virtually pressing a button. VRS will dynamically adjust scanner settings for each document, ensuring next to perfect image quality every time you scan.



Optional Network adapter (fi-5000N)



ScandAll PRO



THE POSSIBILITIES ARE INFINITE

fi-6140 / fi-6240 Specifications



fi-6140



fi-6240

Model	fi-6140	fi-6240
Scanner type	ADF (automatic document feeder)	ADF (automatic document feeder) + flatbed
Scanning modes	Simplex / Duplex, colour / grayscale / monochrome	
Image sensor type	Colour CCD (charge-coupled device) image sensor x 2	Colour CCD (charge-coupled device) image sensor x 3
Light source	White cold cathode discharge lamp	
Scanning range	Maximum: A4 (210 x 297 mm)	
	Minimum (portrait): A8 (52 x 74 mm)	
	–	Flatbed: Maximum: A4 (216 x 297 mm)
Paper weight (no limitation for flatbed)	41 g/m ² to 210 g/m ²	
Scanning speed (JPEG comp. values / A4 portrait) (200dpi)	Colour / Grayscale / Monochrome: Simplex: 40 ppm, Duplex: 80 ipm / Simplex: 60 ppm, Duplex: 120 ipm / Simplex: 60 ppm, Duplex: 120 ipm	
	–	Flatbed: Colour / Grayscale / Monochrome: Approximately 1.7 sec (150 dpi), 2.2 sec (200 dpi)
Paper chute capacity	50 sheets (A4: 80 g/m ²)	
Background colours	White or Black (selectable)	
Optical resolution	600 dpi	
Output resolution	50 to 600 dpi (adjust by 1 dpi increments)	
Output format	Colour: 24 bit / 8 bit, grayscale: 8 bit, monochrome: 1 bit	
AD converter	1024 levels (10 bit)	
Interface	Ultra SCSI or USB 2.0 / USB 1.1 (Selectable / Terminator built in)	
Connector shape	SCSI: Shield type 50 pin (pin type), USB: B type	
Output mode (half-tone)	Dither / error diffusion	
Voltage range	AC 100 to 240 V, ±10%	
Power	Operating: 42W or less (Sleep mode: 6W or less)	
Operational environment	Temperature: 5°C to 35°C, Relative humidity: 20 to 80% (Non-condensing)	
Dimensions (W x D x H base unit)	301 x 160 x 158 mm	301 x 567 x 229 mm
Weight	4.2 kg	8.8 kg
Bundled software/drivers	TWIN, ISIS™, ScandAll PRO, Adobe® Acrobat®, QuickScan™ Pro Demo (Trial), Image processing software (Trial), VRS Professional	
Environmental compliance	ENERGY STAR® and RoHS	
Others	Multi-feed detection	Ultrasonic Multi Feed Detection / Paper length
	Long paper scanning	3048 mm
	Paper counter	Yes



ENERGY STAR® compliant

"Adobe", "Acrobat" and the Adobe PDF logo are either registered trademarks or trademarks of Adobe Systems Incorporated in the United States and/or other countries.

Options	Part number	fi-6140	fi-6240
Imprinter option (fi-614PR)	TBA	Assists document management by printing numbers, Roman characters and codes on original documents after they have been scanned (Available from May, 2008)	–
Image processing software V2.5	PA43402-C2290	This image processing software enables the scanner to efficiently binarize scanned data prior to transmission	
Document holding pad (black) (fi-624BK)	PA03540-D801	–	This is a flatbed black background attachment. Use of this option facilitates the auto-deskewing and auto-orientation of flatbed images.
fi-5000N network adapter	PA03368-B001	Attach fi-6140C / fi-6240C via USB port to fi-5000N to enable secure fingerprint authorised network scanning in a "push-to-network" as well as in a client PC initiated "pull-from-network" scenario.	

Consumables	Part number	fi-6140	fi-6240
Print Cartridge	TBA	Preliminary information: Lifetime 4,000,000 printed characters, fi-614PR print head (Available from May, 2008)	–
Desktop Scanner Cleaning Kit	SC-SLE-KIT1	Includes F1 pump spray cleaner fluid, cleaning sheets with adhesive surface and cleaning paper	
Consumable kit	CON-3540-011A	Includes 2 x pick roller and 2 x brake rollers to support scanning of up to 400,000 sheets	

All names, manufacturer names, brand and product designations are subject to special trademark rights and are manufacturer's trademarks and/or registered brands of their respective owners. All indications are non-binding. Technical data is subject to change without prior notification.

© Copyright 1993-2007, Fujitsu Europe Ltd. All rights reserved. R 11.07 / P 12.07 / ENG

Fujitsu Europe Limited

Hayes Park Central
Hayes End Road, Hayes
Middlesex UB4 8FE
England
Tel: (+44-(0)20) 8573 4444
Fax: (+44-(0)20) 8573 2643

Fujitsu Deutschland GmbH

Frankfurter Ring 211
80807 Munich
Germany
Tel: (+49-(0)89) 32378-0
Fax: (+49-(0)89) 32378-100

Fujitsu Italia S.p.A.

Via Nazario Sauro, 38
20099 Sesto San Giovanni (MI)
Italy
Tel: (+39) 0226294.1
Fax: (+39) 0226294.201

<http://emea.fujitsu.com/scanners>



THE POSSIBILITIES ARE INFINITE